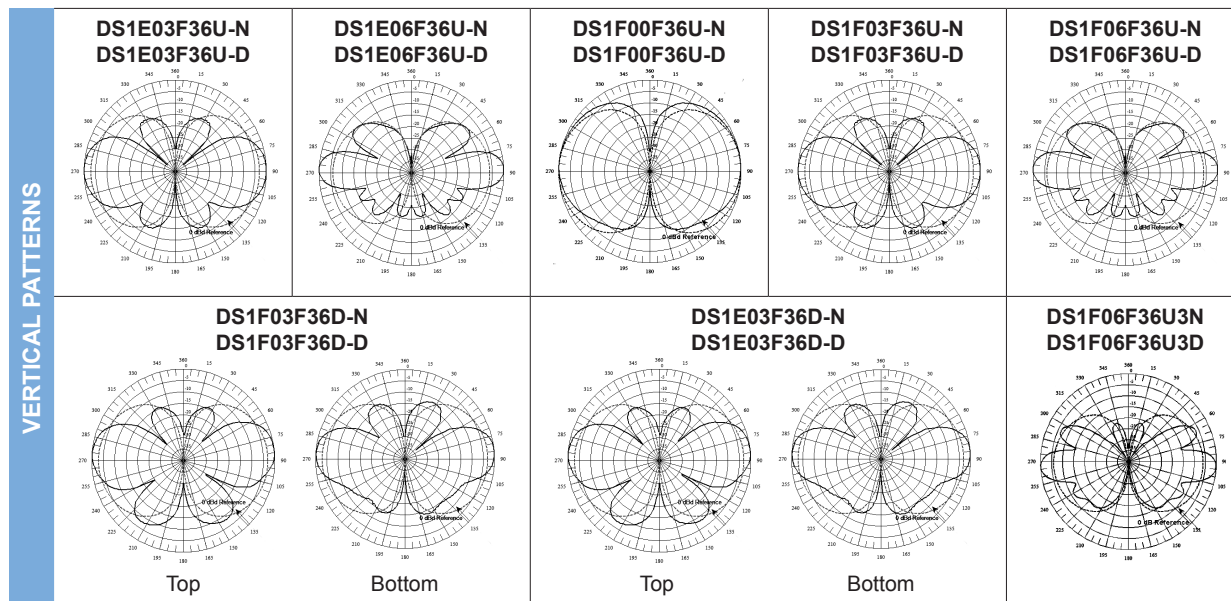


VHF Omni Antennas (140-164 MHz)

		140-150 MHz						150-164 MHz									
Model Number		DS1E03F36U-N	DS1E03F36U-D	DS1E06F36U-N	DS1E06F36U-D	DS1E03F36D-N	DS1E03F36D-D	DS1F00F36U-N	DS1F00F36U-D	DS1F03F36U-N	DS1F03F36U-D	DS1F06F36U-N	DS1F06F36U-D	DS1F03F36D-N	DS1F03F36D-D	DS1F06F36U3N	DS1F06F36U3D
Input Connector		N(F)	7/16 DIN	N(F)	7/16 DIN	N(F)	7/16 DIN	N(F)	7/16 DIN	N(F)	7/16 DIN	N(F)	7/16 DIN	N(F)	7/16 DIN	N(F)	7/16 DIN
Type		Single		Single		Dual		Single		Single		Single		Dual		Beamtilt	
ELECTRICAL	Bandwidth, MHz	10		10		10		14		14		14		14		14	
	Power, Watts	500		500		350		500		500		500		350		500	
	Gain, dBd	3		6		3		0		3		6		3		6	
	Horizontal Beamwidth, degrees	360		360		360		360		360		360		360		360	
	Vertical Beamwidth, degrees	30		16		30		65		30		16		30		16	
	Beam Tilt, degrees	0		0		0		0		0		0		0		3 Down	
	Isolation (minimum), dB	N/A		N/A		30		N/A		N/A		N/A		30		N/A	
MECHANICAL	Number of Connectors	1		1		2		1		1		1		2		1	
	Flat Plate Area, ft <sup>2</sup> (m <sup>2</sup> )	2.5 (0.23)		4.58 (0.43)		4.1 (0.38)		1.63 (0.15)		2.53 (0.24)		4.38 (0.41)		4.5 (0.42)		4.38 (0.41)	
	Lateral Windload Thrust, lbf(N)	105 (467)		172 (765)		169 (752)		60 (267)		95 (423)		164 (730)		169 (752)		164 (730)	
	Survival Wind Speed without ice, mph(kph)	120 (193)		72 (116)		75 (121)		200 (322)		110 (177)		75 (121)		75 (121)		75 (121)	
	with 0.5" radial ice, mph(kph)	100 (161)		52 (84)		65 (105)		161 (260)		93 (150)		60 (97)		65 (105)		60 (97)	
Mounting Hardware included	DSH3V3N		DSH3V3N		DSH3V3N		DSH2V3R		DSH3V3R		DSH3V3N		DSH3V3N		DSH3V3N		
DIMENSIONS	Length, ft(m)	14.9 (4.5)		22.9 (7)		24.3 (7.4)		8.2 (2.5)		12.6 (3.8)		21.9 (6.7)		22.3 (6.8)		21.9 (6.7)	
	Radome O.D., in(cm)	3 (7.6)		3 (7.6)		3 (7.6)		3 (7.6)		3 (7.6)		3 (7.6)		3 (7.6)		3 (7.6)	
	Mast O.D., in(cm)	2.5 (6.4)		2.5 (6.4)		2.5 (6.4)		2.5 (6.4)		2.5 (6.4)		2.5 (6.4)		2.5 (6.4)		2.5 (6.4)	
	Net Weight w/o bracket, lb(kg)	43 (19.5)		65 (29.5)		70 (31.8)		20 (9.1)		37 (16.8)		60 (27.2)		63 (28.6)		60 (27.2)	
	Shipping Weight, lb(kg)	73 (33.1)		95 (43.1)		100 (45.4)		40 (18.1)		67 (30.4)		90 (40.8)		93 (42.2)		90 (40.8)	



# VHF Omni Antennas (160-222 MHz)

		160-174 MHz						217-222 MHz									
Model Number		DS1G03F36U-N	DS1G03F36U-D	DS1G06F36U-N	DS1G06F36U-D	DS1G03F36D-N	DS1G03F36D-D	DS2C00F36U-N	DS2C00F36U-D	DS2C03F36U-N	DS2C03F36U-D	DS2C06F36U-N	DS2C06F36U-D	DS2C00F36D-N	DS2C00F36D-D	DS2C03F36D-N	DS2C03F36D-D
Input Connector		N(F)	7/16 DIN	N(F)	7/16 DIN	N(F)	7/16 DIN	N(F)	7/16 DIN	N(F)	7/16 DIN	N(F)	7/16 DIN	N(F)	7/16 DIN	N(F)	7/16 DIN
Type		Single		Single		Dual		Single		Single		Single		Dual		Dual	
ELECTRICAL	Bandwidth, MHz	14		14		14		5		5		5		5		5	
	Power, Watts	500		500		350		500		500		500		350		350	
	Gain, dBd	3		6		3		0		3		6		0		3	
	Horizontal Beamwidth, degrees	360		360		360		360		360		360		360		360	
	Vertical Beamwidth, degrees	30		16		30		60		30		16		60		30	
	Beam Tilt, degrees	0		0		0		0		0		0		0		0	
	Isolation (minimum), dB	N/A		N/A		30		N/A		N/A		N/A		30		30	
MECHANICAL	Number of Connectors	1		1		2		1		1		1		2		2	
	Flat Plate Area, ft <sup>2</sup> (m <sup>2</sup> )	2.53 (0.24)		4.38 (0.41)		4.5 (0.42)		1.9 (0.18)		1.9 (0.18)		2.58 (0.24)		2.4 (0.22)		4.1 (0.38)	
	Lateral Windload Thrust, lbf(N)	95 (423)		164 (730)		169 (752)		53 (236)		69 (307)		108 (480)		90 (400)		169 (752)	
	Survival Wind Speed without ice, mph(kph)	110 (177)		75 (121)		75 (121)		222 (357)		172 (277)		110 (177)		130 (209)		75 (121)	
	with 0.5" radial ice, mph(kph)	93 (150)		60 (97)		65 (105)		193 (311)		150 (241)		96 (154)		115 (185)		65 (105)	
Mounting Hardware included	DSH3V3R		DSH3V3N		DSH3V3N		DSH2V3R		DSH2V3R		DSH3V3N		DSH3V3R		DSH3V3N		
DIMENSIONS	Length, ft(m)	12.7 (3.9)		21.9 (6.7)		22.3 (6.8)		7.7 (2.3)		9.9 (3)		18.1 (5.5)		13.6 (4.1)		24.3 (7.4)	
	Radome O.D., in(cm)	3 (7.6)		3 (7.6)		3 (7.6)		3 (7.6)		3 (7.6)		3 (7.6)		3 (7.6)		3 (7.6)	
	Mast O.D., in(cm)	2.5 (6.4)		2.5 (6.4)		2.5 (6.4)		2.5 (6.4)		2.5 (6.4)		2.5 (6.4)		2.5 (6.4)		2.5 (6.4)	
	Net Weight w/o bracket, lb(kg)	37 (16.8)		60 (27.2)		63 (28.6)		19 (8.6)		26 (11.8)		47 (21.3)		40 (18.1)		70 (31.8)	
	Shipping Weight, lb(kg)	67 (30.4)		90 (40.8)		93 (42.2)		39 (17.7)		56 (25.4)		77 (34.9)		70 (31.8)		100 (45.4)	

