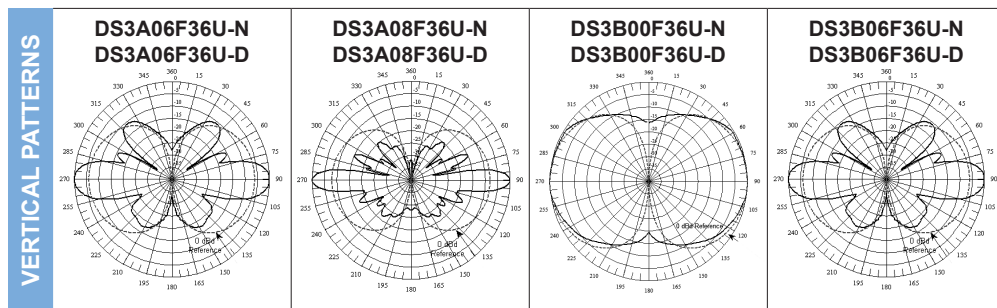


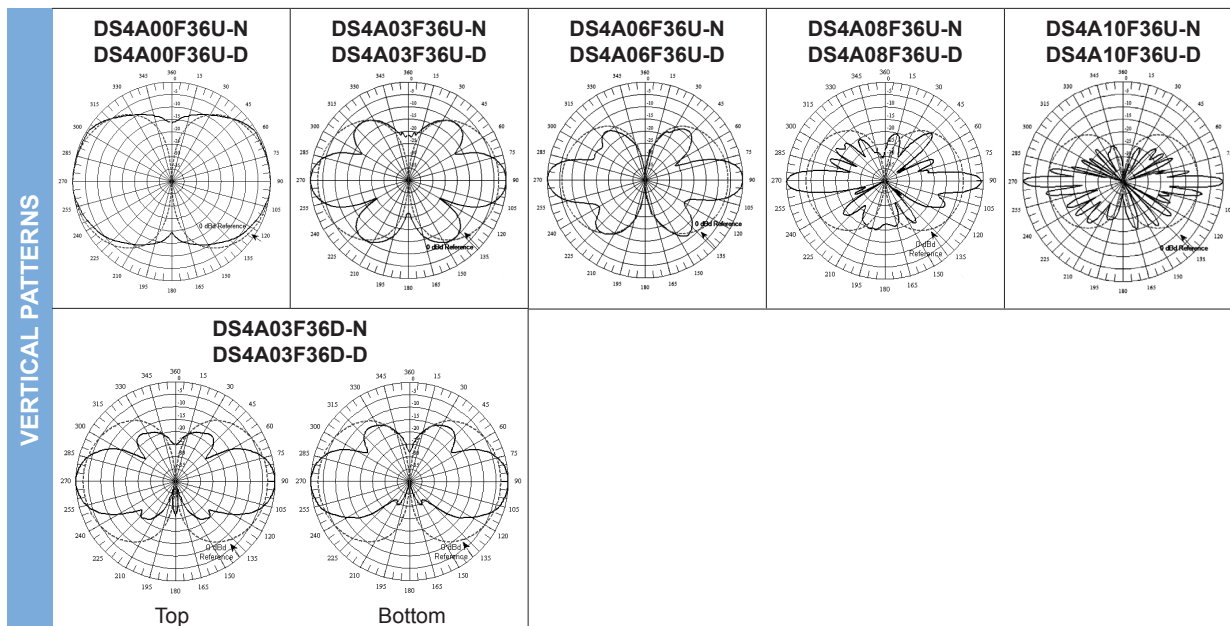
UHF Omni Antennas (300 MHz)

		380-410 MHz				370-390 MHz			
Model Number		DS3A06F36U-N	DS3A06F36U-D	DS3A08F36U-N	DS3A08F36U-D	DS3B00F36U-N	DS3B00F36U-D	DS3B06F36U-N	DS3B06F36U-D
Input Connector		N(F)	7/16 DIN	N(F)	7/16 DIN	N(F)	7/16 DIN	N(F)	7/16 DIN
Type		Single		Single		Single		Single	
ELECTRICAL	Bandwidth, MHz	30		30		20		20	
	Power, Watts	500		500		500		500	
	Gain, dBd	6		8		0		6	
	Horizontal Beamwidth, degrees	360		360		360		360	
	Vertical Beamwidth, degrees	16		10		60		16	
	Beam Tilt, degrees	0		0		0		0	
	Isolation (minimum), dB	N/A		N/A		N/A		N/A	
MECHANICAL	Number of Connectors	1		1		1		1	
	Flat Plate Area, ft ² (m ²)	2.35 (0.22)		3.65 (0.34)		0.8 (0.07)		1.96 (0.18)	
	Lateral Windload Thrust, lbf(N)	88 (391)		136 (605)		13.4 (59)		88 (391)	
	Survival Wind Speed without ice, mph(kph) with 0.5" radial ice, mph(kph)	140 (225) 115 (185)		90 (145) 65 (105)		352 (566) 257 (414)		140 (225) 115 (185)	
	Mounting Hardware included	DSH3V3R		DSH3V3N		DSH2V3R		DSH3V3R	
DIMENSIONS	Length, ft(m)	11.8 (3.6)		18.3 (5.6)		3.6 (1.1)		11.8 (3.6)	
	Radome O.D., in(cm)	3 (7.6)		3 (7.6)		2 (5.1)		3 (7.6)	
	Mast O.D., in(cm)	2.5 (6.4)		2.5 (6.4)		2.5 (6.4)		2.5 (6.4)	
	Net Weight w/o bracket, lb(kg)	35 (15.9)		47 (21.3)		6.7 (3.0)		35 (15.9)	
	Shipping Weight, lb(kg)	65 (29.5)		77 (34.9)		16.7 (7.6)		65 (29.5)	



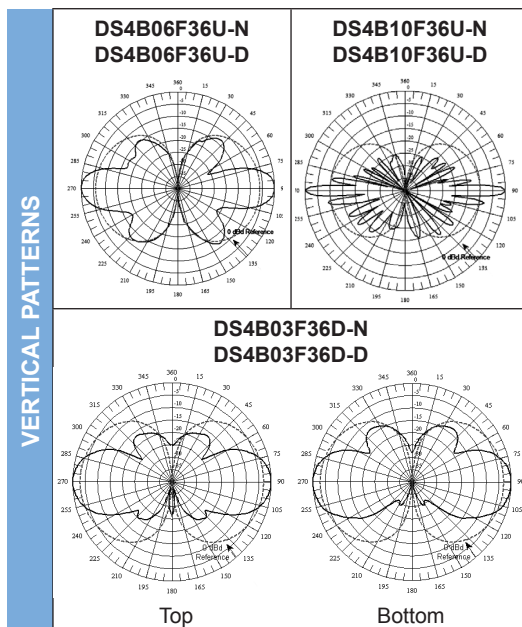
UHF Omni Antennas (406-436 MHz)

		406-436 MHz											
Model Number		DS4A00F36U-N	DS4A00F36U-D	DS4A03F36U-N	DS4A03F36U-D	DS4A06F36U-N	DS4A06F36U-D	DS4A08F36U-N	DS4A08F36U-D	DS4A10F36U-N	DS4A10F36U-D	DS4A03F36D-N	DS4A03F36D-D
Input Connector		N(F)	7/16 DIN	N(F)	7/16 DIN	N(F)	7/16 DIN	N(F)	7/16 DIN	N(F)	7/16 DIN	N(F)	7/16 DIN
Type		Single		Single		Single		Single		Single		Dual	
ELECTRICAL	Bandwidth, MHz	30		30		30		30		30		30	
	Power, Watts	500		500		500		500		500		350	
	Gain, dBd	0		3		6		8		10		3	
	Horizontal Beamwidth, degrees	360		360		360		360		360		360	
	Vertical Beamwidth, degrees	60		30		16		10		6		30	
	Beam Tilt, degrees	0		0		0		0		0		0	
	Isolation (minimum), dB	N/A		N/A		N/A		N/A		N/A		30	
MECHANICAL	Number of Connectors	1		1		1		1		1		2	
	Flat Plate Area, ft ² (m ²)	0.38 (0.04)		0.83 (0.08)		2.35 (0.22)		3.65 (0.34)		4 (0.37)		2 (0.19)	
	Lateral Windload Thrust, lbf(N)	10 (46)		19 (83)		88 (391)		110 (489)		179 (796)		60 (267)	
	Survival Wind Speed without ice, mph(kph) with 0.5" radial ice, mph(kph)	451 (726) 329 (529)		253 (407) 185 (298)		140 (225) 115 (185)		90 (145) 65 (105)		75 (121) 60 (97)		161 (259) 130 (209)	
Mounting Hardware included	DSH2V3R		DSH2V3R		DSH3V3R		DSH3V3N		DSH3V3N		DSH3V3R		
DIMENSIONS	Length, ft(m)	2.8 (0.9)		5 (1.5)		11.8 (3.6)		18.3 (5.6)		24 (7.2)		10.4 (3.2)	
	Radome O.D., in(cm)	2 (5.1)		2 (5.1)		3 (7.6)		3 (7.6)		3 (7.6)		3 (7.6)	
	Mast O.D., in(cm)	2.5 (6.4)		2.5 (6.4)		2.5 (6.4)		2.5 (6.4)		2.5 (6.4)		2.5 (6.4)	
	Net Weight w/o bracket, lb(kg)	5.5 (2.5)		8 (3.6)		35 (15.9)		47 (21.3)		70 (31.8)		29 (13.2)	
	Shipping Weight, lb(kg)	9.6 (4.4)		18 (8.2)		65 (29.5)		77 (34.9)		100 (45.4)		59 (26.8)	



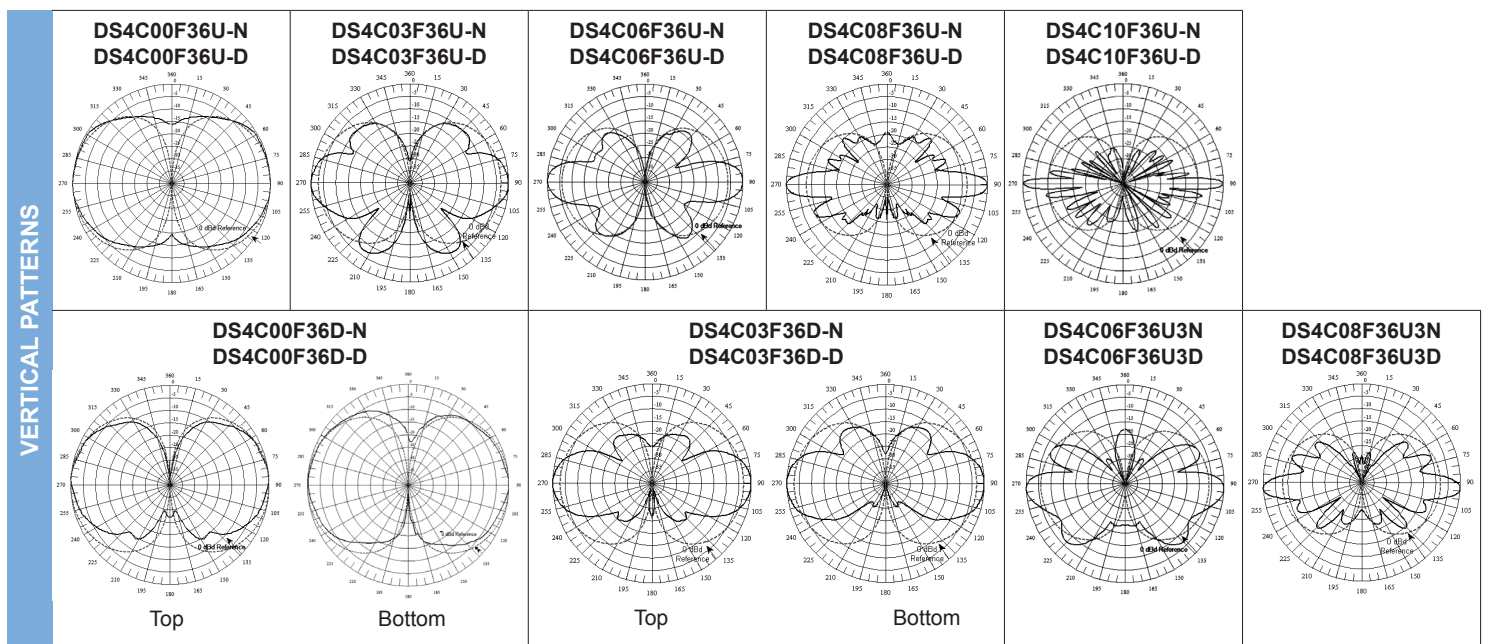
UHF Omni Antennas (425-455 MHz)

		425-455 MHz											
Model Number		DS4B06F36U-N		DS4B06F36U-D		DS4B10F36U-N		DS4B10F36U-D		DS4B03F36D-N		DS4B03F36D-D	
Input Connector		N(F)		7/16 DIN		N(F)		7/16 DIN		N(F)		7/16 DIN	
Type		Single		Single		Single		Single		Dual		Dual	
ELECTRICAL	Bandwidth, MHz	30		30		30		30		30		30	
	Power, Watts	500		500		500		500		350		350	
	Gain, dBd	6		10		10		10		3		3	
	Horizontal Beamwidth, degrees	360		360		360		360		360		360	
	Vertical Beamwidth, degrees	16		6		6		6		30		30	
	Beam Tilt, degrees	0		0		0		0		0		0	
	Isolation (minimum), dB	N/A		N/A		N/A		N/A		36		36	
MECHANICAL	Number of Connectors	1		1		1		1		2		2	
	Flat Plate Area, ft ² (m ²)	2.35 (0.22)		3.98 (0.37)		3.98 (0.37)		3.98 (0.37)		1.74 (0.16)		1.74 (0.16)	
	Lateral Windload Thrust, lbf(N)	88 (391)		179 (796)		179 (796)		179 (796)		105 (467)		105 (467)	
	Survival Wind Speed												
	without ice, mph(kph)	140 (225)		70 (113)		70 (113)		70 (113)		120 (193)		120 (193)	
with 0.5" radial ice, mph(kph)	115 (185)		50 (80)		50 (80)		50 (80)		100 (161)		100 (161)		
Mounting Hardware included	DSH3V3R		DSH3V3N		DSH3V3N		DSH3V3N		DSH3V3N		DSH3V3N		
DIMENSIONS	Length, ft(m)	11.8 (3.6)		23.8 (7.3)		23.8 (7.3)		23.8 (7.3)		14 (4.3)		14 (4.3)	
	Radome O.D., in(cm)	3 (7.6)		3 (7.6)		3 (7.6)		3 (7.6)		3 (7.6)		3 (7.6)	
	Mast O.D., in(cm)	2.5 (6.4)		2.5 (6.4)		2.5 (6.4)		2.5 (6.4)		2.5 (6.4)		2.5 (6.4)	
	Net Weight w/o bracket, lb(kg)	35 (15.9)		65 (29.5)		65 (29.5)		65 (29.5)		40 (18.1)		40 (18.1)	
	Shipping Weight, lb(kg)	65 (29.5)		95 (43.1)		95 (43.1)		95 (43.1)		70 (31.8)		70 (31.8)	



UHF Omni Antennas (450-482 MHz)

		450-482 MHz																	
Model Number		DS4C00F36U-N	DS4C00F36U-D	DS4C03F36U-N	DS4C03F36U-D	DS4C06F36U-N	DS4C06F36U-D	DS4C08F36U-N	DS4C08F36U-D	DS4C10F36U-N	DS4C10F36U-D	DS4C00F36D-N	DS4C00F36D-D	DS4C03F36D-N	DS4C03F36D-D	DS4C06F36U3N	DS4C06F36U3D	DS4C08F36U3N	DS4C08F36U3D
Input Connector		N(F)	7/16 DIN	N(F)	7/16 DIN	N(F)	7/16 DIN	N(F)	7/16 DIN	N(F)	7/16 DIN	N(F)	7/16 DIN	N(F)	7/16 DIN	N(F)	7/16 DIN	N(F)	7/16 DIN
Type		Single		Single		Single		Single		Single		Dual		Dual		Beamtilt		Beamtilt	
ELECTRICAL	Bandwidth, MHz	32		32		32		32		32		32		32		32		32	
	Power, Watts	500		500		500		500		500		350		350		500		500	
	Gain, dBd	0		3		6		8		10		0		3		6		8	
	Horizontal Beamwidth, degrees	360		360		360		360		360		360		360		360		360	
	Vertical Beamwidth, degrees	60		30		16		10		6		60		30		16		10	
	Beam Tilt, degrees	0		0		0		0		0		0		0		3 Down		3 Down	
	Isolation (minimum), dB	N/A		N/A		N/A		N/A		N/A		> 25		36		N/A		N/A	
MECHANICAL	Number of Connectors	1		1		1		1		1		2		2		1		1	
	Flat Plate Area, ft ² (m ²)	0.38 (0.04)		1.59 (0.15)		2 (0.19)		3.65 (0.34)		4.78 (0.44)		1.24 (0.12)		2.79 (0.26)		1.93 (0.18)		3.65 (0.34)	
	Lateral Windload Thrust, lbf(N)	10 (46)		60 (267)		60 (267)		136 (605)		179 (796)		35 (154)		105 (467)		73 (322)		120 (534)	
	Survival Wind Speed without ice, mph(kph) with 0.5" radial ice, mph(kph)	451 (726) 329 (529)		200 (322) 175 (282)		161 (259) 130 (209)		90 (145) 65 (105)		70 (113) 50 (80)		177 (285) 145 (233)		120 (193) 100 (161)		170 (274) 150 (241)		95 (153) 65 (105)	
	Mounting Hardware included	DSH2V3R		DSH2V3R		DSH3V3R		DSH3V3N		DSH3V3N		DSH2V3R		DSH3V3N		DSH3V3R		DSH3V3N	
DIMENSIONS	Length, ft(m)	2.8 (0.9)		8 (2.4)		10.3 (3.1)		18.3 (5.6)		23.8 (7.3)		6.2 (1.9)		14 (4.3)		9.7 (3)		18.3 (5.6)	
	Radome O.D., in(cm)	2 (5.1)		3 (7.6)		3 (7.6)		3 (7.6)		3 (7.6)		2 (5.1)		3 (7.6)		3 (7.6)		3 (7.6)	
	Mast O.D., in(cm)	2.5 (6.4)		2.5 (6.4)		2.5 (6.4)		2.5 (6.4)		2.5 (6.4)		2.5 (6.4)		2.5 (6.4)		2.5 (6.4)		2.5 (6.4)	
	Net Weight w/o bracket, lb(kg)	5.5 (2.5)		20 (9.1)		29 (13.2)		47 (21.3)		65 (29.5)		13 (5.9)		40 (18.1)		25 (11.3)		47 (21.3)	
	Shipping Weight, lb(kg)	9.6 (4.4)		40 (18.1)		59 (26.8)		77 (34.9)		95 (43.1)		20.6 (9.3)		70 (31.8)		55 (24.9)		77 (34.9)	



UHF Omni Antennas (480-512 MHz)

		480-512 MHz											
Model Number		DS4D00F36U-N	DS4D00F36U-D	DS4D03F36U-N	DS4D03F36U-D	DS4D06F36U-N	DS4D06F36U-D	DS4D08F36U-N	DS4D08F36U-D	DS4D10F36U-N	DS4D10F36U-D	DS4D06F36D-N	DS4D06F36D-D
Input Connector		N(F)	7/16 DIN	N(F)	7/16 DIN	N(F)	7/16 DIN	N(F)	7/16 DIN	N(F)	7/16 DIN	N(F)	7/16 DIN
Type		Single		Single		Single		Single		Single		Dual	
ELECTRICAL	Bandwidth, MHz	32		32		32		32		32		32	
	Power, Watts	500		500		500		500		500		350	
	Gain, dBd	0		3		6		8		10		6	
	Horizontal Beamwidth, degrees	360		360		360		360		360		360	
	Vertical Beamwidth, degrees	60		30		16		10		6		16	
	Beam Tilt, degrees	0		0		0		0		0		0	
	Isolation (minimum), dB	N/A		N/A		N/A		N/A		N/A		35	
MECHANICAL	Number of Connectors	1		1		1		1		1		2	
	Flat Plate Area, ft ² (m ²)	0.4 (0.04)		1.28 (0.12)		2 (0.19)		3.65 (0.34)		4.0 (0.37)		3.06 (0.28)	
	Lateral Windload Thrust, lbf(N)	14 (63)		48 (214)		60 (267)		136 (605)		179 (796)		110 (489)	
	Survival Wind Speed without ice, mph(kph) with 0.5" radial ice, mph(kph)	350 (565) 260 (418)		250 (402) 225 (362)		161 (259) 130 (209)		90 (145) 65 (105)		75 (121) 60 (97)		90 (145) 65 (105)	
	Mounting Hardware included	DSH2V3R		DSH2V3R		DSH3V3R		DSH3V3N		DSH3V3N		DSH3V3N	
DIMENSIONS	Length, ft(m)	2.8 (0.9)		6.4 (2)		10.3 (3.1)		18.3 (5.6)		23.9 (7.3)		19.4 (5.9)	
	Radome O.D., in(cm)	2 (5.1)		3 (7.6)		3 (7.6)		3 (7.6)		3 (7.6)		3 (7.6)	
	Mast O.D., in(cm)	2.5 (6.4)		2.5 (6.4)		2.5 (6.4)		2.5 (6.4)		2.5 (6.4)		2.5 (6.4)	
	Net Weight w/o bracket, lb(kg)	5.5 (2.5)		16 (7.3)		29 (13.2)		47 (21.3)		65 (29.5)		50 (22.7)	
	Shipping Weight, lb(kg)	9.6 (4.4)		26 (11.8)		59 (26.8)		77 (34.9)		95 (43.1)		80 (36.3)	

