

# Antenna Mounting Hardware



DSH1V3R



DSH2H3R

## REGULAR MOUNTING

Mount aluminum base station antennas to round or angled tower legs. Center section of each clamp is welded to provide mechanical stability and all parts are hot-dipped galvanized steel.

MODELS	DSH1V3R	DSH2V3R	DSH2H3R	DSH3V3R
	DSH1V4R	DSH2V4R	DSH2H4R	DSH3V4R
Antenna Length, ft(m)	0 (0) to 3.5 (1)	3.5 (1) to 10 (3.1)	3.5 (1) to 10 (3.1)	10 (3.1) to 14 (4.3)
# of Clamps	1	2	2	3
Mounting	Vertical	Vertical	Horizontal	Vertical
Pipe Mount, in (mm): 3R	1.3 (32) to 3.5 (89)	1.3 (32) to 3.5 (89)	1.3 (32) to 3.5 (89)	1.3 (32) to 3.5 (89)
Pipe Mount, in (mm): 4R	1.3 (32) to 4 (102)	1.3 (32) to 4 (102)	1.3 (32) to 4 (102)	1.3 (32) to 4 (102)
Weight, lb (kg)	4 (1.8)	7 (3.2)	10 (4.5)	9(4.1)
Shipping Weight, lb (kg)	6 (2.7)	8 (3.6)	12(5.5)	10(4.5)

## HEAVY-DUTY “NO-TORSION” MOUNTING

Utilizes three clamps on a galvanized steel tube to mount antennas to round tower members.

MODEL	DSH3V3N	DSH3V4N
Antenna Length, ft(m)	14 (4.3) and greater	14 (4.3) and greater
# of Clamps	3	3
Mounting	Vertical	Vertical
Pipe Mount, in (mm)	3 (76.2) MAX.	4 (101.6) MAX.
Weight, lb (kg)	28 (12.7)	28 (12.7)
Shipping Weight, lb (kg)	30 (13.6)	30 (13.6)
Shipping Dimensions (W x H x D), in(mm)	11 x 33 x 4 (279 x 838 x 102)	11 x 33 x 4 (279 x 838 x 102)

## TOP SWAY BRACE - OUTRIGGER MOUNTING

Limit tip deflection on 3-inch diameter fiberglass antennas in high wind conditions. Attaches to the tower legs using supplied DSH2H3R hardware kit (above). Recommended on top-mounted antennas >16 feet long.

MODEL	DSH2H3S
# of Clamps	2
Mounting	Horizontal
Flange Inner Diameter, in (mm)	3.38 (85.7)
Tube Diameter, in (mm)	2 (50.8)
Length to Center of Flange ft (m)	12 feet (3.6)
Weight, lb (kg)	10 (4.5)
Shipping Weight, lb (kg)	20 (9.1)
Shipping Dimensions (W x H x D), in (mm)	11 x 33 x 4 (279 x 838 x 102)

## DIRECTIONAL ANTENNA MOUNTING HARDWARE

### Model

### DB380

Antenna Length	N/A
# of Clamps	2
Mounting	Antenna-to-Pipe
Pipe Mount, in(mm)	3.5 (76.2)
Weight, lb (kg)	10 (4.5)
Shipping Weight, lb (kg)	20 (9.1)

# DSH2H3S (Outriggers), DSH6H3P (Side Mount)

DSH2H3S (Figure 2) outriggers are designed to limit tip deflection on fiberglass antennas in high wind conditions. Outriggers are recommended for all antennas longer than 16 feet.

DSH2H3S can be used for larger side-mounted fiberglass antennas with 3-inch O.D. Radomes. Two optional 14-inch tie wraps can be used with this outrigger to provide additional support for the antenna.

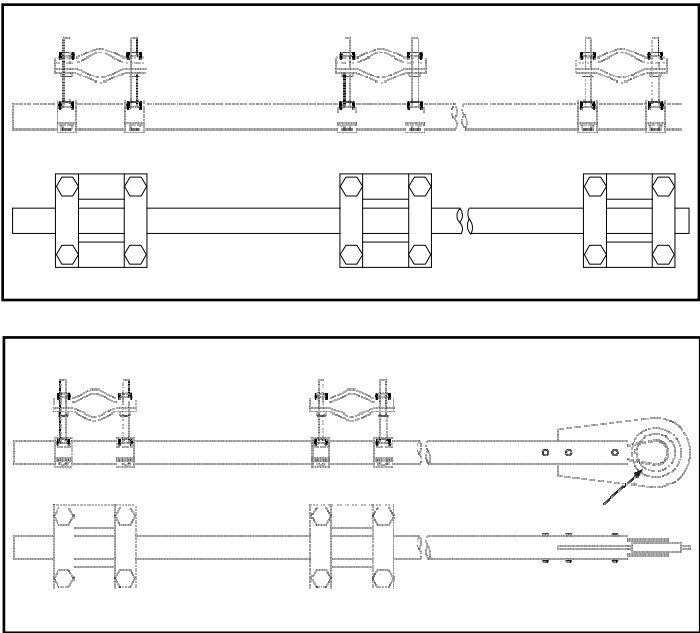
DSH2H3S outriggers are 120 inches (3.1 m) in length and attach to the tower legs using hardware supplied with kit.

DSH6H3P (Figures 1 & 3) is an adjustable side mount kit that mounts across the face of the tower. This kit includes two 10-foot sections of pipe and six clamp assemblies.

Carefully read all instructions before installation begins.

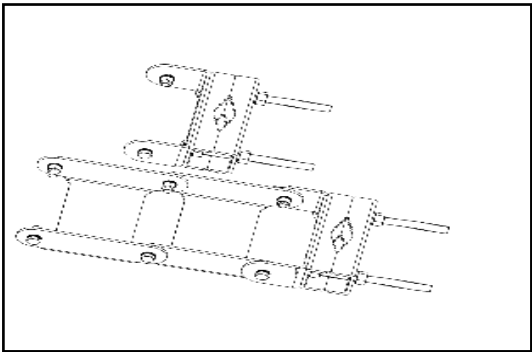
Verify that all required hardware is present.

Follow the instructions that are included with the antenna along with the instructions described in this bulletin.



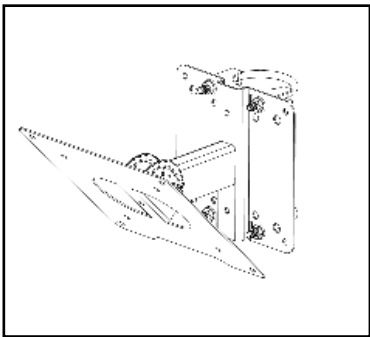
Mounting Bracket for side-by-side panel antenna (multi-port configurations) using two panel antennas under a single custom radome.

MODEL NUMBER	PIVOT BRACKET	DOWNTILT BRACKET
DSH3Q3DT (3.5" PIPE)	1	2
DSH3Q4DT (3.5" PIPE)	1	3
DSH4V4DT (4" PIPE)	1	3



## DSH202030

Tilt Mounting Bracket 12" x 12" x 10". The bracket can be Pipe-mounted or Wall-mounted. When wall mounted the U-clamp will be discarded. This kit is recommended for use with the DS7W9P65D-H Panel antenna.



## DSH2V3V

V-Bolt Mounting Kit for 3" max. O.D. round members. Set of two V-bolt clamp sets. Package Quantity 2, Net weight 2.0 lb. Recommended for use in light-duty or indoor applications.

