

Directional Panel Antennas (406-512 MHz and 746-869 MHz)

dbSpectra

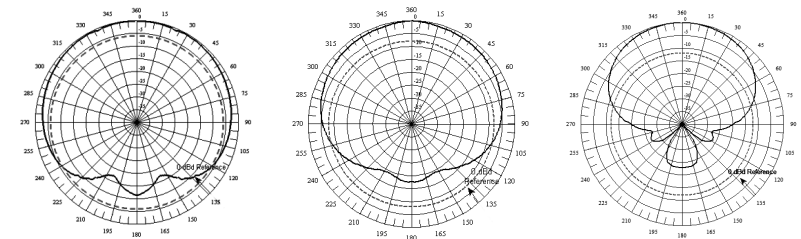
MODEL	DS4E06P18U-N	DS4E08P12U-N	DS7A12P90U-N
Model with 7/16 DIN	DS4E06P18U-D	DS4E08P12U-D	DS7A12P90U-D
Type	Directional Panel	Directional Panel	Directional Panel

ELECTRICAL SPECIFICATIONS			
Frequency Range (MHz)	406-512	406-512	746-869
Bandwidth (MHz)	106	106	123
Power (Watts)	500	500	500
Gain (dBd)	6	7.5	12
Horizontal Beamwidth (degrees)	180	120	90
Vertical Beamwidth (degrees)	27	27	14
Beam Tilt (degrees)	0	0	0
VSWR	1.5:1	1.5:1	1.5:1

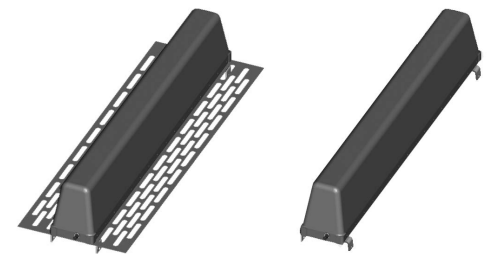
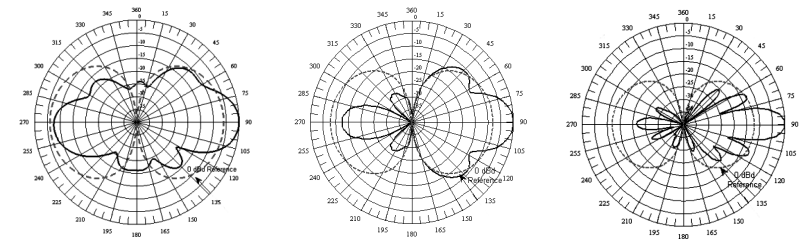
MECHANICAL SPECIFICATIONS			
Material/Construction	ABS Plastic/Galvanized Steel	ABS Plastic/Galvanized Steel	ABS Plastic/Galvanized Steel
Reflector Screen	Passivated Aluminum	Passivated Aluminum	Passivated Aluminum
Input Connector	N(F)	N(F)	N(F)
Temperature Range (degrees)	-30 to + 60 C	-30 to + 60 C	-30 to + 60 C
Flat Plate Area (ft ² /m ²)	2.6 / 0.24	5.83 / 0.5	2.33 / 0.22
Mounting Hardware - included	DSH2V3R	DSH2V3R	DSH2V3R

DIMENSIONS			
Width (in/mm)	7.8 / 198.1	16 / 406.4	6.5 / 165.1
Height (in/mm)	48 / 1219.2	48 / 1219.2	52 / 1320.8
Depth (in/mm)	8 / 203.2	8 / 203.2	12 / 304.8
Net Weight - without bracket (lb/kg)	19 / 8.6	25 / 11.3	15 / 6.8
Shipping Weight (lb/kg)	29 / 13.1	36.7 / 16.64	25 / 11.3

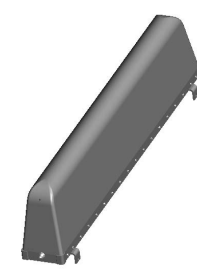
HORIZONTAL PATTERN



VERTICAL PATTERN



DS4E08P12U-N DS4E06P18U-N



DS7A12P90U-N

Specifications are subject to change. Please visit www.dbspectra.com for the latest information on our products, including new product offerings.