

Yagi Antennas (450-512 MHz and 764-940 MHz)

Wideband Directional Beam for Control Station Applications

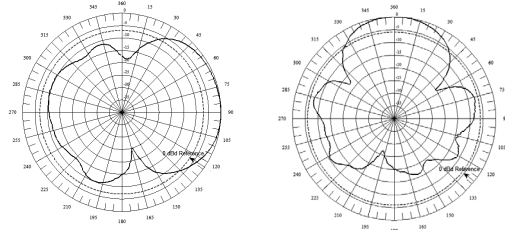
dbSpectra

MODEL	DS4K07Y85U-N	DS7G08Y60U-N
Model with 7/16 DIN	N/A	N/A
Type	Directional Yagi	Directional Yagi
ELECTRICAL SPECIFICATIONS		
Frequency Range (MHz)	450-512	764-940
Bandwidth (MHz)	62	214
Power (Watts)	250	150
Gain (dBd)	7 ± 0.5	8 ± 0.5
Horizontal Beamwidth (degrees)	85 ± 5	60 ± 15
Vertical Beamwidth (degrees)	60 ± 5	45 ± 10
Beam Tilt (degrees)	0	0
VSWR	≤2.0:1	≤2.0:1
MECHANICAL SPECIFICATIONS		
Material/Construction	Aluminum/Stainless Steel	Aluminum/Stainless Steel
Radome Material	UV Polyester	UV Polyester
Input Connector	N(F)	N(F)
Temperature Range (degrees)	-30 to +60 C	-30 to +60 C
Flat Plate Area (ft ² /m ²)	0.42 / 0.13	0.27 / 0.03
Mounting Hardware - included	DSH2V3V	DSH2V3V
DIMENSIONS		
Width (in/mm)	15 / 381	8.5 / 215.9
Height (in/mm)	24 / 609.6	27 / 685.8
Depth (in/mm)	3 / 76.2	1.5 / 38.1
Net Weight - without bracket (lb/kg)	3 / 1.4	3 / 1.4
Shipping Weight (lb/kg)	13 / 5.9	13 / 5.9

HORIZONTAL PATTERN

DS4K07Y85U-N

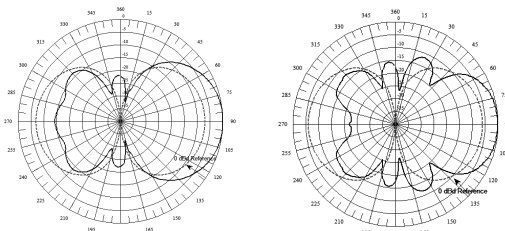
DS7G08Y60U-N



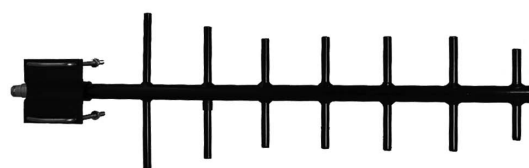
VERTICAL PATTERN

DS4K07Y85U-N

DS7G08Y60U-N



DS4K07Y85U-N



DS7G08Y60U-N